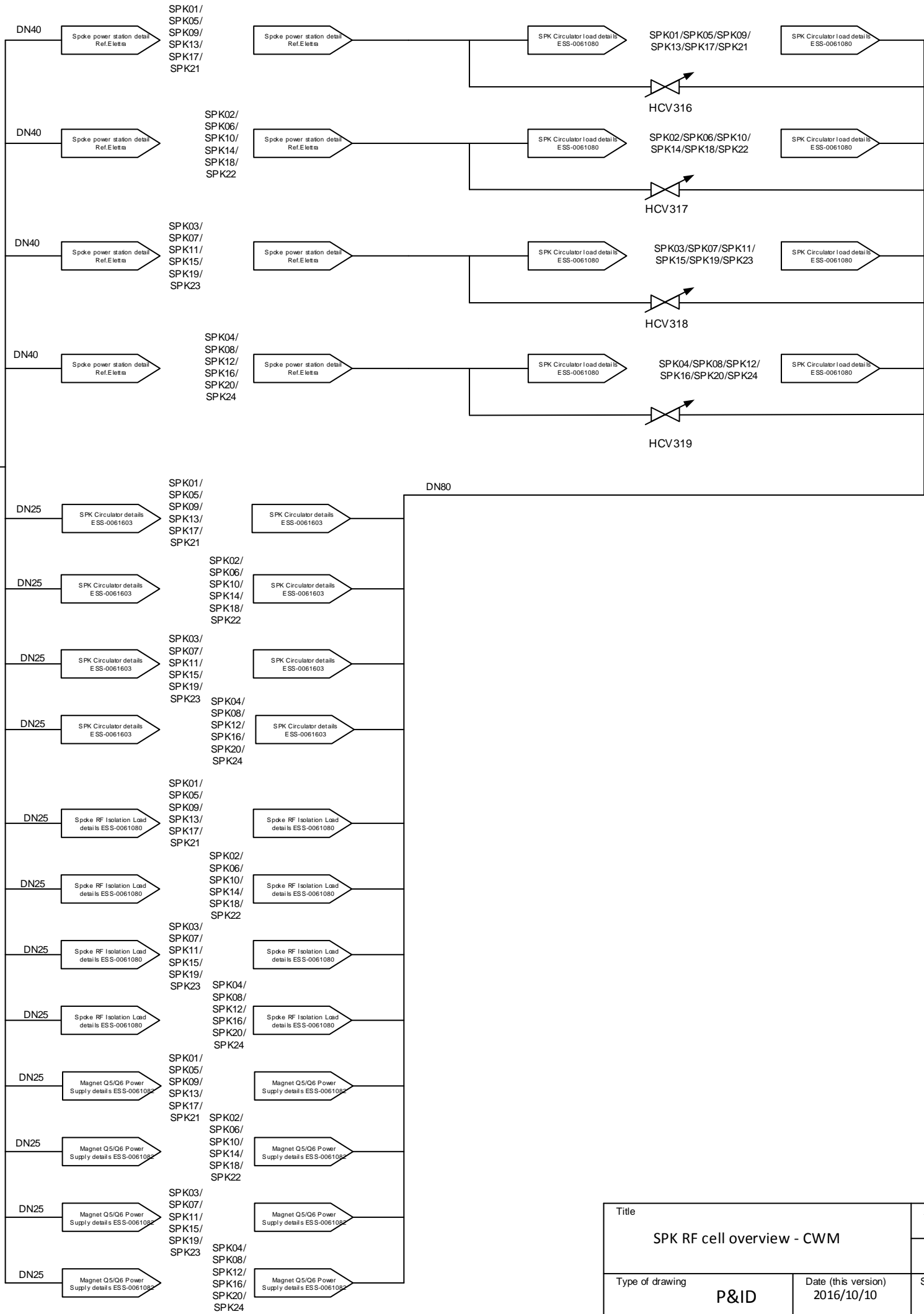
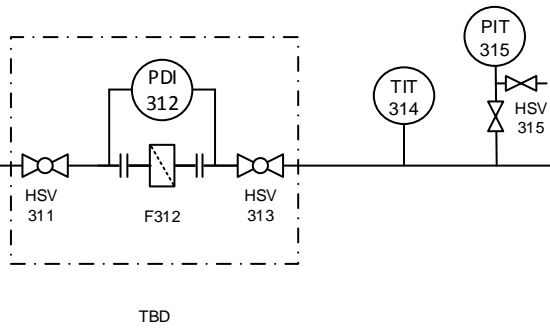


NOTE 1



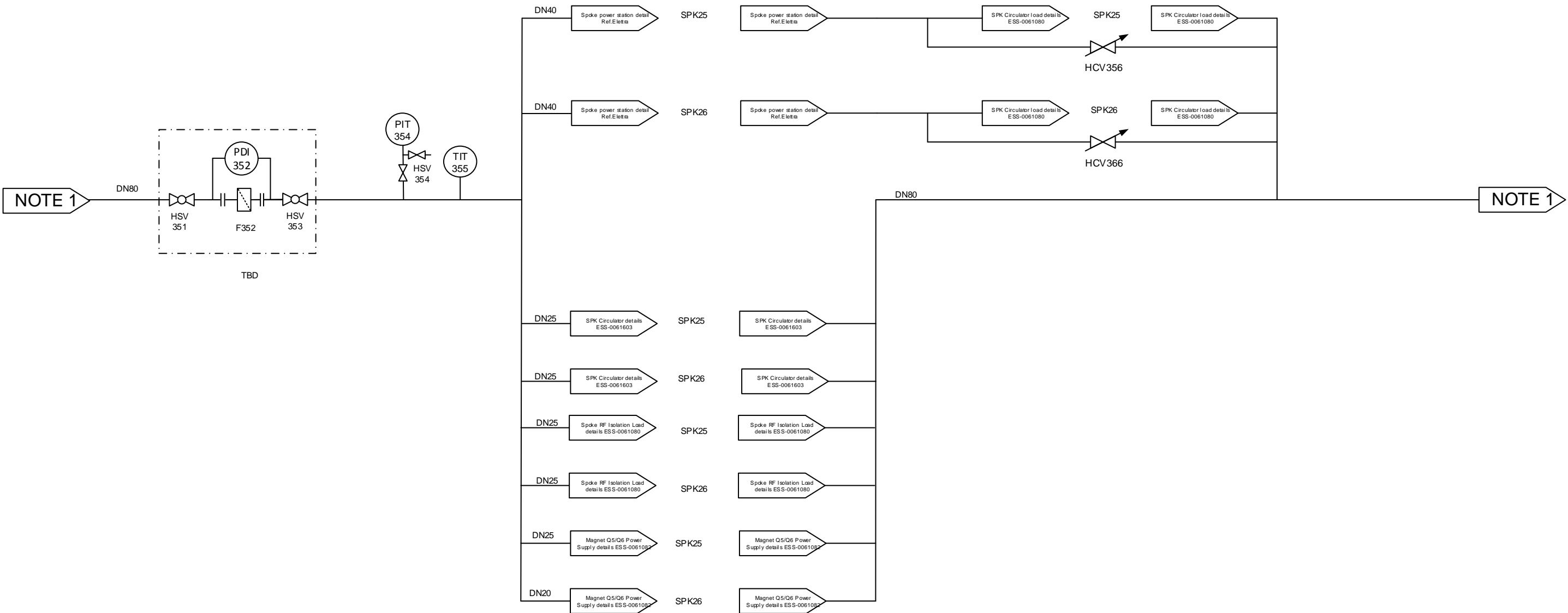
NOTE 1

NOTES:
1. PS0155---8-6---008
2. Page 1 shows SPK RF cell (4 power stations) and is repeated 6 times (stub 120 - 140) along the gallery building G02.
3. See page 2 for the last RF cell (stub 150 East)

For Legend see ESS-0033888
Design pressure 10 bar(g)
Design temp Max/Min 50/10 °C


Title		Approved by		Signature	
SPK RF cell overview - CWM		-		Signature	
		Designed / changed by AC		Signature	
Type of drawing	Date (this version)	Size	Page	Scale	Drawing No
P&ID	2016/10/10	A3	1 of 2	-	ESS-0059399
					Revision
					1





NOTES:
1. PS0155---8-6---008
2. Page 1 shows SPK RF cell (4 power stations) and is repeated 6 times (stub 120 - 140) along the gallery building G02.
3. See page 2 for the last RF cell (stub 150 East)

For Legend see ESS-0033888
Design pressure 10 bar(g)
Design temp Max 50 °C

Title SPK RF cell overview - CWM		Approved by -		Signature	 EUROPEAN SPALLATION SOURCE
		Designed / changed by AC		Signature	
Type of drawing P&ID	Date (this version) 2016/09/05	Size A3	Page 2 of 2	Scale -	Drawing No ESS-0059399 Revision 1